



DATASHEET

Key Features

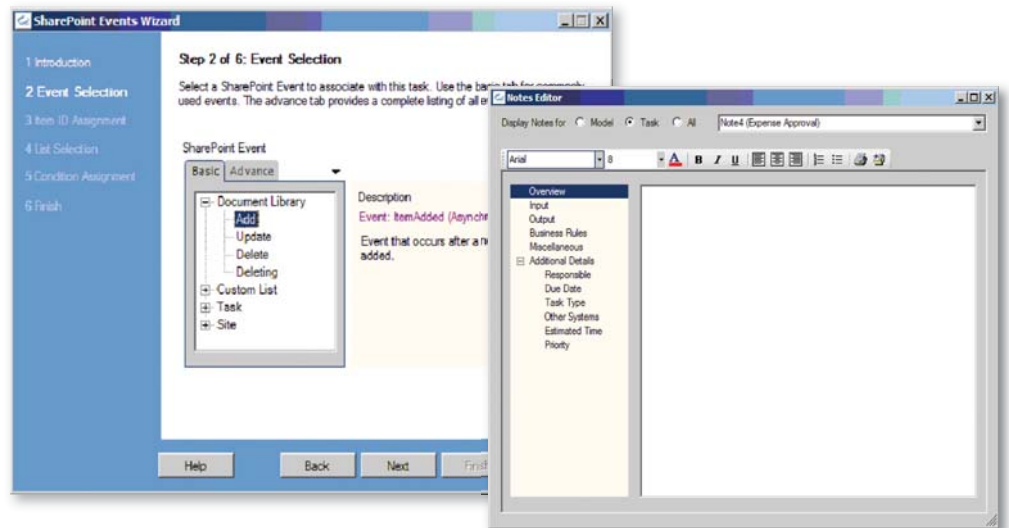
- Support for Microsoft Office SharePoint Server 2007
 - Captaris Workflow TaskList Web part within SharePoint Server 2007
 - Integration with Microsoft Office InfoPath® and Forms Server 2007 (Thin client support)
 - New integration of event triggers within SharePoint Server 2007
- Key Performance Indicators (KPIs) in TaskLists for both Windows and Web Interfaces
- Process Notes for new requirements definition at design time
- New Role-based Task Assignment
- Support for Microsoft SQL Server 2005 Express
- Captaris Workflow Simulation Module 2.1 built on Microsoft Windows Workflow Foundation (WinWF)
- Captaris Workflow Toolkit for Microsoft BizTalk® Server 2006 offers new capabilities

Captaris Workflow™ 6.5

Captaris Workflow 6.5 delivers powerful new Microsoft® Office SharePoint® 2007 Support

Captaris Workflow TaskList Web part within SharePoint

The Captaris Workflow TaskList supports legacy workflow components for the Web parts and custom actions. In addition, SharePoint event notification has been enhanced to allow a designer to easily associate a workflow model to a SharePoint Event. For example, an event such as a system trigger can be used to create a workflow process, or an event might be used during the process to advance a process to the next step. A simple Wizard is provided in both the Workflow IDE and Visual Studio to create these associations. The powerful new capability allows SharePoint users to manage their complex workflow from the SharePoint site by creating desired workflows and then advancing them through the required steps using the familiar SharePoint UI.

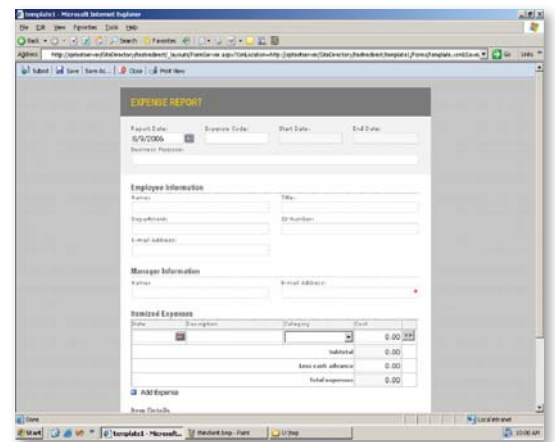


Integration with InfoPath and Forms Server 2007

Integration with InfoPath includes new thin client support so that users can view InfoPath forms on a Web-connected workstation without having InfoPath installed at their workstations. This new capability makes it easier to deploy business process solutions that require forms across the enterprise.

Thin client support of InfoPath forms allows the designer to create a workflow view for the form, advance the workflow view, perform forms validation and confirm a successful submission. A completed task can be viewed in Read-only mode.

A simple Wizard is provided in both the IDE and in Visual Studio.



Key Performance Indicators (KPIs) in the TaskLists for both Windows and Web Interfaces

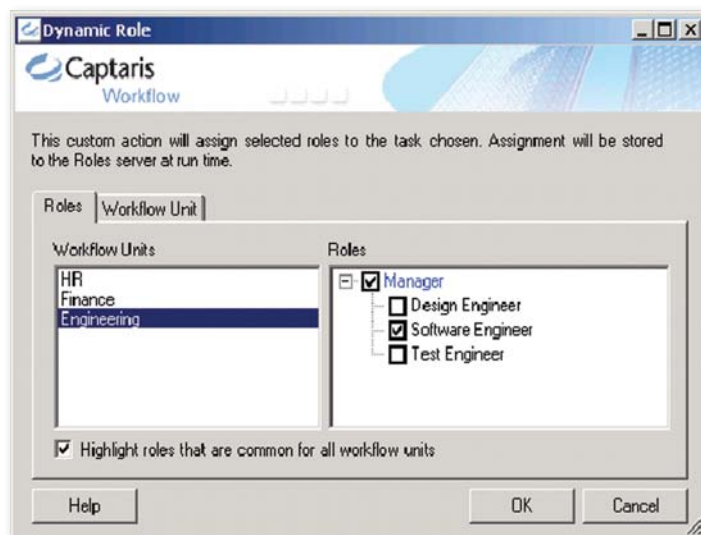
The task management capability in Captaris Workflow has become even more powerful in Captaris Workflow 6.5. Users can now specify user defined Key Performance Indicators (KPIs) for their tasks, viewing, filtering and sorting their lists based on the values of those KPIs. A user's personalized TaskList might use KPIs such as priority, time of task, or status, allowing them to manage their work based on these key business criteria. KPIs are easily defined using a new workflow Wizard. They are also easy to use; dragging a KPI to the menu bar will filter the TaskList based on that KPI. These new features complement the ability to color code tasks to determine status or action requirements.



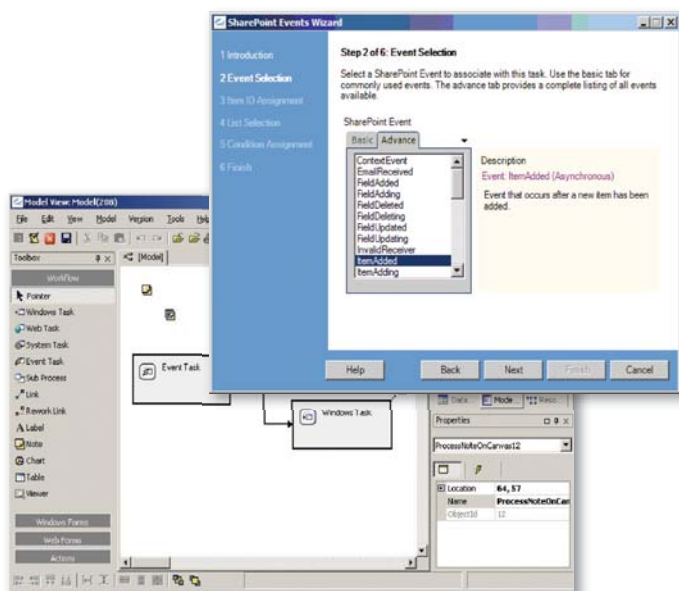
and developer can include diagrams, existing forms, or details of the business logic to be followed. The notes can be mapped in the IDE and exported to Visual Studio. They also can be sent to Microsoft Office programs to provide more complete documentation of the workflow process. The new process notes allow the instructions to be put directly in the design diagram and used as program documentation for the developer upon completion of a complex workflow.

New Role-based Task Assignment

The new Role-based Task Assignment feature allows more refined assignments of tasks to be performed. Any task can now be statically assigned to a particular role, or it can be dynamically resolved when the workflow is processing. Designers may design tasks for assignment to one or several roles for completion, and base the actual run-time assignment on availability or other rules. Task assignment can even be driven by the results of custom actions. This feature is integrated with Microsoft Authorization Manager to identify roles for individual users. This feature is used to direct a workflow task to anyone having characteristics or rights to complete the task, thus creating more flexible handling of inbox assignments by any appropriate user in the right roles. The actual assignment of a task to a specific individual is done at task execution time.



Captaris Workflow 6.5 allows the business analyst or designer to create process notes describing the logic and presentation to the model developer



Captaris Workflow 6.5 supports SQL Server 2005 Express

Captaris Workflow 6.5 now supports SQL Server 2005 Express in addition to SQL Server 2000 and SQL Server 2005. This simplifies initial evaluations, proof-of-concept projects, and other small deployments. As the deployment grows in scale, it can be upgraded to run on a full SQL Server 2005 system without a change in functionality.

Captaris Workflow Simulation Module 2.1 is built on Windows Workflow Foundation

The Captaris Workflow Simulation Module 2.1 empowers business process analysts to perform "what-if" scenarios to improve and optimize processes and estimate Return on Investment (ROI). Analysts are able to define the following metrics for each step of a workflow process:

- Time to complete the step
- Resources utilized in the task
- The cost associated with that process
- Revenue generated as a result of the step

With business analysts defining workflow models, and developers refining them into working applications, good communication is important to a project's success. With modeling processes, the business analysts may find the need to pass along additional details to the developer that are not explicitly captured in the model prototype. Captaris Workflow 6.5 now allows model designer to create process notes to be stored with the overall model or specific task in the workflow. Because the notes are stored as rich text, they can be as simple or complex as needed to clarify any specific directions to the developer. This enhanced communication between the business analyst

Analysts can run workflow models in real-time, or as scenarios that compress time, simulating several hours or days of work activity in just a few seconds.

This means that within a few hours an analyst is able to simulate several weeks of "what-if" virtual activity without directly impacting real business activities. This provides organizations with a powerful development and productivity tool that enables managers to effectively evaluate a re-engineered workflow process, or optimize and improve workflows in production deployments.

Enhancements in Simulation Module 2.1 include a new, streamlined look and feel, and a simple simulation workflow model design canvas based on the use of Windows Workflow Foundation (WinWF). Simulation Module 2.1 enables business process analysts to import a Captaris Workflow model (or any model stored in the .XOML format), modify or expand the model, add configuration and metrics, and then run the simulation to analyze potential bottlenecks, estimate resource costs and profitability and generate reports. Simulation Module 2.1 allows analysts to compare simulation runs, generate comparison reports, and perform more analysis even faster than before by retaining and graphing the historical simulation results.



workflow that was waiting for an external event managed by BizTalk, yielding a reliable synchronization between the BizTalk business process and the Captaris Workflow business process.

To learn more about Captaris Workflow 6.5, visit www.Captaris.com/workflow, contact a member of the Captaris Workflow sales team in your area or visit http://www.Captaris.com/contact_us/.

FOR MORE INFORMATION

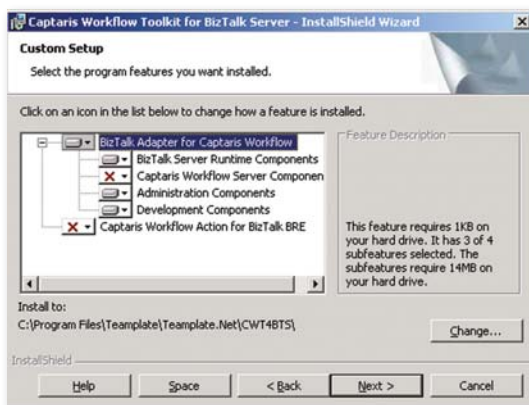
Captaris sales representatives are eager to answer your questions and recommend solutions that can help meet your specific needs. If you are interested in finding more information about Captaris solutions, locate the product sales representative for your region.

- Africa, Middle East and India: + 971 439 002 80
- Asia: + 852 282 482 23
- Australia and New Zealand: + 61 293 151 111
- Benelux and Nordics: + 31 347 324 212
- Central Europe: + 49 251 7624 9650
- Eastern Europe: + 44 796 872 8653
- Japan and Korea: + 1 303 570 7896
- Latin America: + 1 520 320 7094
- Southern Europe: + 31 347 324 201
- United Kingdom, Ireland and Israel: +44 1296 621 100

Captaris, Inc. is a leading provider of software products that automate business processes, manage documents electronically and provide efficient information delivery. Our product suite of Captaris RightFax®, Captaris Workflow and Captaris Alchemy® is distributed through a global network of leading technology partners. We have customers in financial services, healthcare, government and many other industries, and our products are installed in all of the Fortune 100 and many Global 2000 companies. Headquartered in Bellevue, Washington, Captaris was founded in 1982 and is publicly traded on the NASDAQ Global Market under the symbol CAPA. For more information, please visit www.Captaris.com/International.

Captaris Workflow Toolkit for BizTalk Server 2006 offers new capabilities

The Captaris Workflow Toolkit for BizTalk Server (BizTalk Toolkit) provides the tools required to implement the solutions that Captaris Workflow business processes and BizTalk



Server 2006 orchestrations need to interact and exchange messages. Using the BizTalk Toolkit can reduce development, testing and maintenance efforts associated with these solutions. The Captaris Workflow designer can use this integration point to leverage business rule policies that have been defined within BizTalk Server using the Business Rules Composer. The integration consists of a Captaris Workflow Custom Action with its corresponding Custom Action Wizard. The BizTalk developer, working in Visual Studio .NET 2005, can utilize the Captaris Workflow Send or Receive Port to advance the

Captaris Workflow is Represented by:

©2007 All rights reserved. No part of this publication may be reproduced, transmitted, transcribed, stored in a retrieval system, or translated into any language in any form by any means without the written permission of Captaris. The following are registered trademarks and trademarks of Captaris: Captaris, Alchemy, RightFax and Captaris Workflow. All other brand names and trademarks are the property of their respective owners. MC0010400